



PAN & TILT 3.5" IP Dome Camera

Clairvoyant1062



Description

Among all network video solutions, Clairvoyant1062 is the most cost efficient, especially suitable for all broadband users. Clairvoyant1062W comes with Wi-Fi and RJ-45 port, support DHCP, PPPoE ADSL dial-up and DDNS client.

Clairvoyant1062 is an economical model of advanced IP camera device. It comes with many high quality features, yet cost is relevantly low. Clairvoyant1062 works standalone with broadband connection allows remotely viewing of images by Microsoft IE browser anywhere, any time.

Just like any network device, with its own IP address, Clairvoyant1062 connects directly to a standard network switch or wireless AP. This enables viewing real time digital video over the LAN or Internet from all over the world.

Clairvoyant1062 uses existing Network (IP) technology. In a case of surveillance project, using existing IP network infrastructure combining with Clairvoyant1062, extra costs related to traditional installation and deployment of analog CCTV surveillance systems (such as coaxial cables, monitors and video recorders) can be eliminated, being digital, the problem of loss of



resolution with cable length doesn't exist.

Clairvoyant1062 is designed around a powerful camera platform. A genius embedded WEB server and real-time operating system with Standalone Motion Detection alarming guarantee 24/7 operation in the most demanding of environments.

Feature Highlights

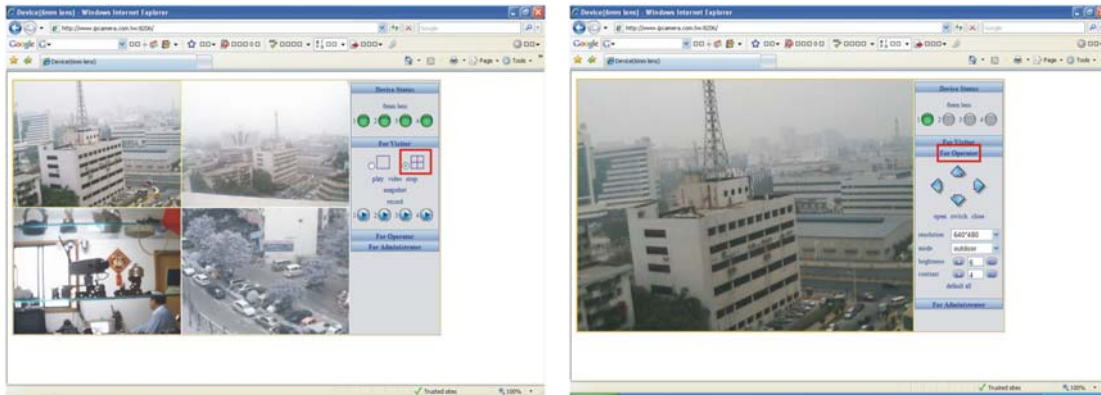
- A least cost solution for remote monitoring;
- PAN 355 degree, TILT 90 degree
- A highly developed on-board image processor;
- **Duplex two-way audio (optional)**
- An inbuilt WEB server and **standalone motion detection with scheduler**;
- JPEG and MJPEG video compression;
- Access by IE browser, no complicated client software required;
- View 1 or 4 cameras image on IE screen;
- Recording on IE screen, playback by media player;
- Simultaneous Multiple Accesses from remote, LAN or Internet;
- Additional security is provided through password protections for the camera;
- **Standalone motion detection** and alarm input **with scheduler** to trigger snapshots or external alarming devices (siren, light, etc..);
- Email snapshots enable sending alarm notifications to assigned e-mail boxes;
- Send snapshots to FTP server;
- Easy IP camera tool & quick install guide are included in product CD;
- PPPoE & DHCP accompany with DDNS service;
- Connect to ADSL/Cable Modem or NAT router;
- Monitoring/ video recording is included in hardware;
- 10 meters effective IR lamination by Ø10 IR Led (Optional) ;
- **IEEE 802.11g** 2.4GHz Wi-Fi with WEP 64/128 bits & **WPA** protection.

Market Applications

Due to the benefits of our low costs strategy, new business applications can be implemented and integrated with Clairvoyant1062, such as:

- ISP promotional bundles
- VoIP telephone tie-in to be video phone

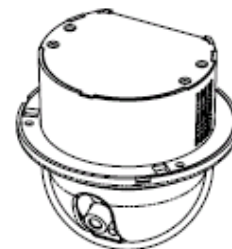
- Live video embedded into homepages, online advertisement
- Remote Control / Vehicles Control / Chain stores Control / Advertising / Traffics Alerts
- Baby and elderly tending
- Private Security/ Caring



Technical Data

Image System

- Compression: Motion JPEG hardware compression
- 350,000 pixels CMOS sensor (Micron 360, S/N: 45dB, Dynamic Range 60dB)
- f: 6.0mm to infinity m11 lens (optional f: 2.1mm ~ 4.2mm available)
- Aperture: F 1.8 (optional F2.0 ~ F2.8 available)
- Lens with 850nm IR filter
- Min. 2.0 to 3.0 Lux
- Automatic Exposure Control
- Automatic Gain Control
- Automatic Brightness Control
- Automatic White Balance
- Flicker Avoidance (Flicker less)
- Resolution:
 - QVGA (320 x 240)
 - VGA (640 x 480)
- Image Frame Rate:
 - Max. 25 fps at QVGA resolution, average 4 Mbps/sec
 - Max. 15 fps at VGA resolution, average 4 Mbps/sec

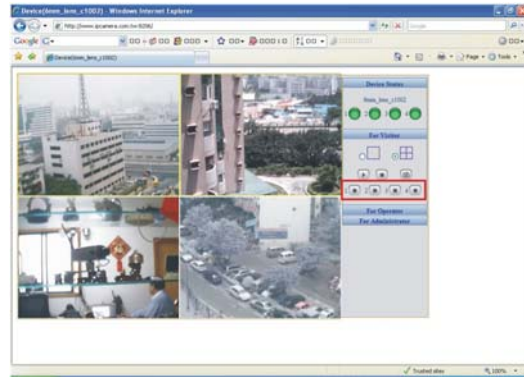


Mechanical

- PAN : 355°
- TILT : 90°



- Optional IR leds : Ø10 LED
- I/O Interface
- CAT5, RJ-45 x1 (802.3)
- RS-485 for PTZ control (optional)
- **IEEE 802.11g** Wi-Fi with WEP, WPA (C1062W)
- Alarm in (NO), Alarm out (NO ; 1A 24VDC/ 0.5A 125VAC)
- **Microphone in (optional)**
- **Line out (optional)**



Network Protocols

- TCP/IP, HTTP, ARP, ICMP, PPPoE, DHCP, SMTP, DDNS, FTP

Client

- IE6 or later
- **Mozilla Firefox**

Antenna (C1062W)

- Detachable (RSMA)
- 2dBi @2.4GHz omni
- IPEX1.13
- Optional 5dBi omni or directional available



Mechanical & Environment

- Dimensions (mm):
Ø : 95 (dome), 121 (ring),
mount length: 150
- Weight (g): 450
- Power Requirement: 5 V / 1A
- Operation Temp: -10 °C to 50 °C (14 °F to 122 °F)
- Humidity: Rh10 % to 90 %

